



MONTHLY MEMBERSHIP PROGRESS REPORT

District 1 BK

Results as of: 5/31/2017

GMT: THOMAS MATNEY

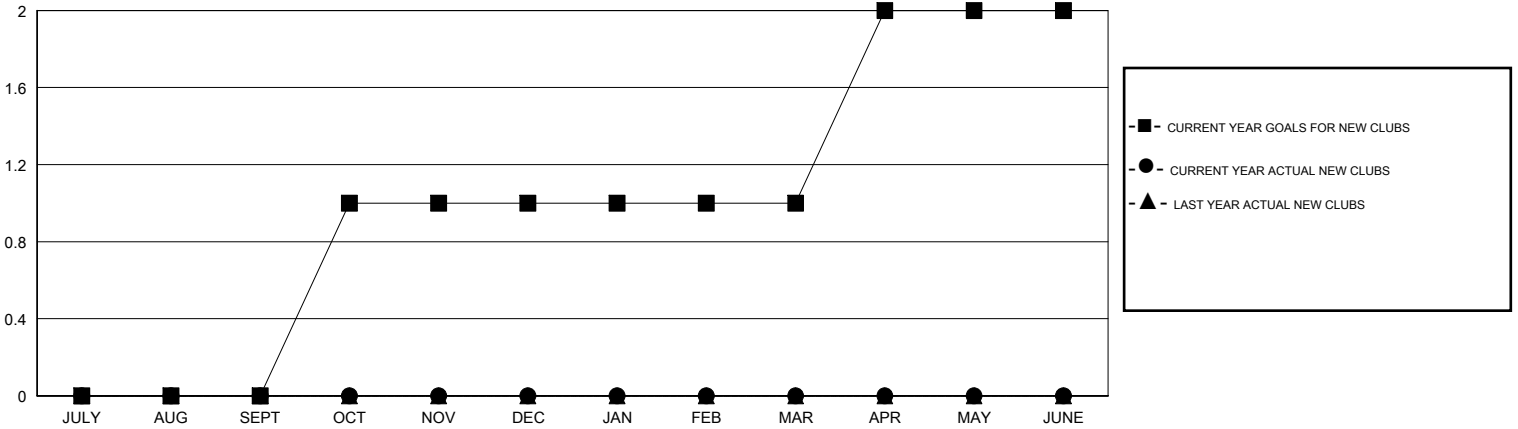
LOCATION ILLINOIS

GMT CA

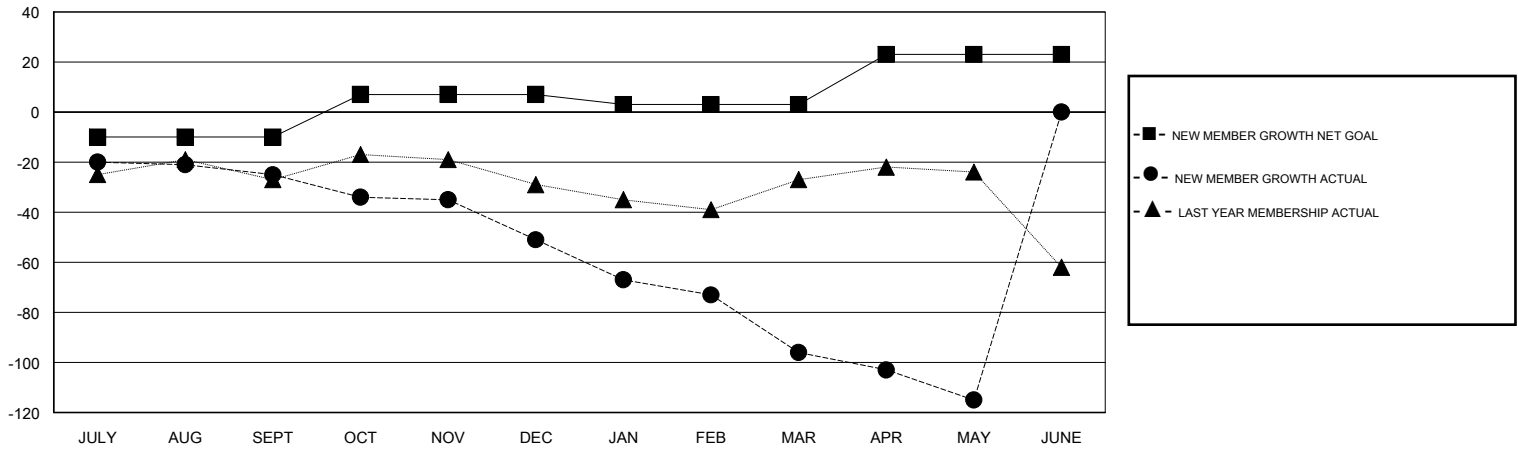
Clubs			
RESULTS FOR 2016-2017			
QUARTER	NEW CLUB GOAL	NEW CLUBS	DROPPED CLUBS
JULY/AUG/SEPT	0	0	0
OCT/NOV/DEC	1	0	0
JAN/FEB/MAR	0	0	0
APR/MAY/JUNE	1	0	0

Members			
RESULTS FOR 2016-2017			
QUARTER	NEW MEMBER GROWTH NET GOAL (not reinstated or transfers)	NEW MEMBER GROWTH ACTUAL (not reinstated or transfers)	DROPPED MEMBERS ACTUAL (including transfers)
JULY/AUG/SEPT	-10	31	56
OCT/NOV/DEC	17	36	62
JAN/FEB/MAR	-4	27	72
APR/MAY/JUNE	20	18	37

GOALS AND ACTUAL NEW CLUBS CUMULATIVE



GOALS AND ACTUAL MEMBERS CUMULATIVE



DROPPED CLUBS: 0	40 CLUBS OF 70 ADDED 1 OR MORE NEW MEMBERS	<u>GENDER DISTRIBUTION</u>
DROPPED MEMBERS	CLICK HERE FOR CUMULATIVE MEMBERSHIP DATA	MALE 1,615 (79.36%)
DECEASED 37		FEMALE 420 (20.64%)
CLUB CANCELLED 0		TOTAL FAMILY UNIT MEMBERS 297
OTHER 190		FAMILY MEMBERS PAYING HALF DUES 151
TOTAL 227		